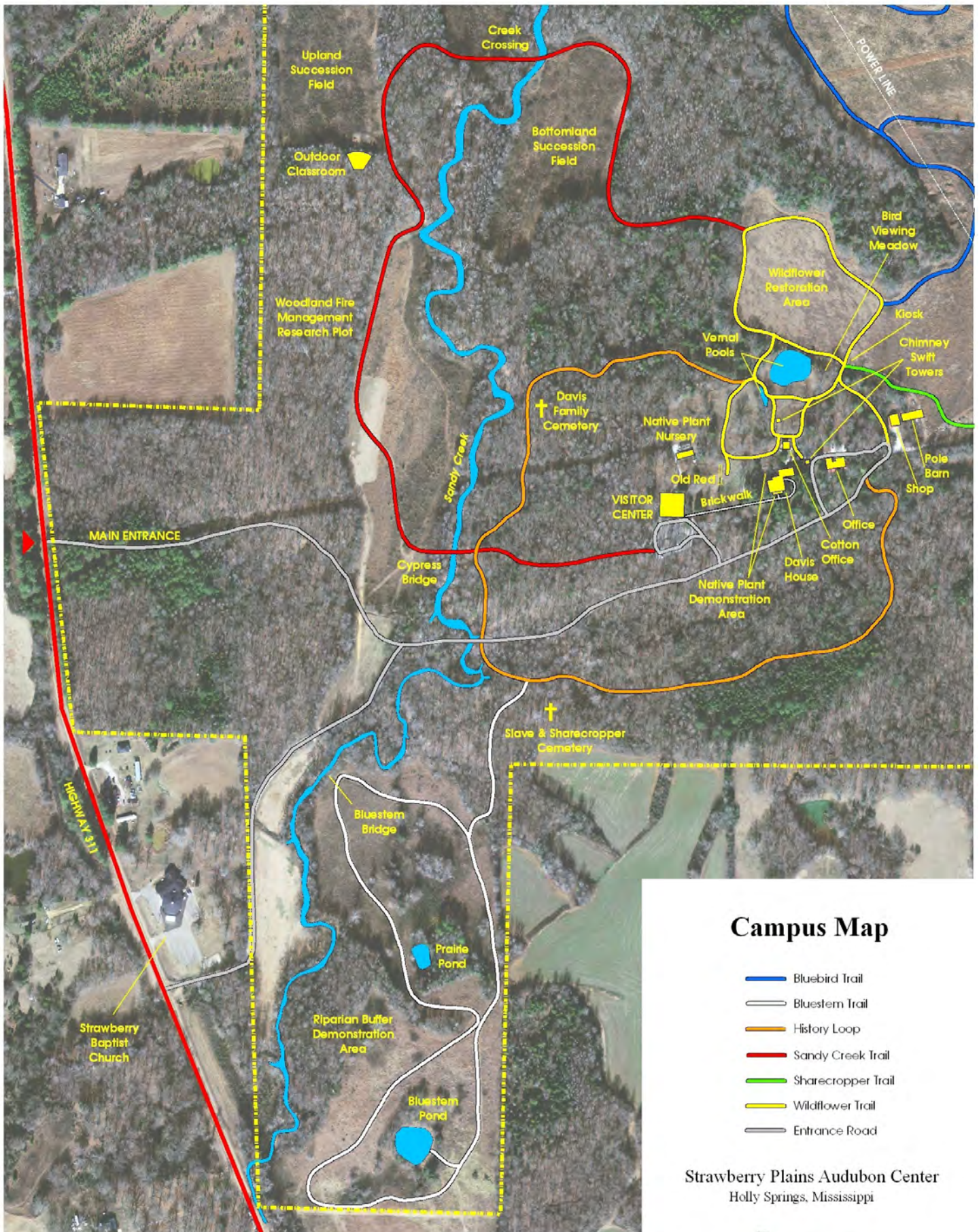


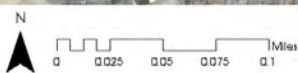
Center and trails are open 8 am till 4 pm. Please plan your hike accordingly.



Campus Map

- Bluebird Trail
- Bluestem Trail
- History Loop
- Sandy Creek Trail
- Sharecropper Trail
- Wildflower Trail
- Entrance Road

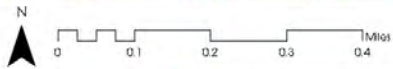
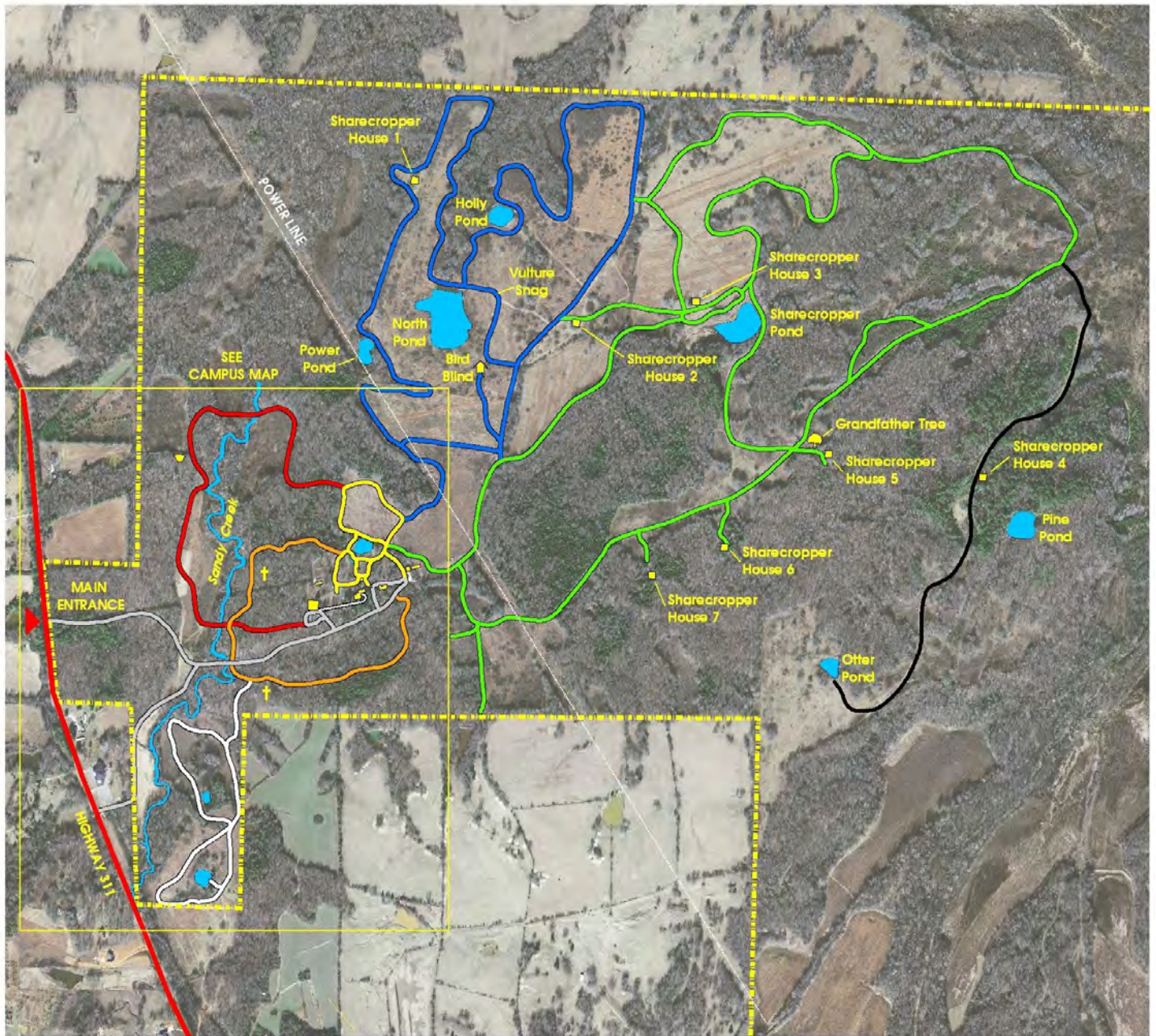
Strawberry Plains Audubon Center
Holly Springs, Mississippi



NAD 1983 HARN StatePlane Mississippi East FIPS 23-1 Feet / 2006 Aerial

Contact: 662-252-1155

Center and trails are open 8 am till 4 pm. Please plan your hike accordingly.



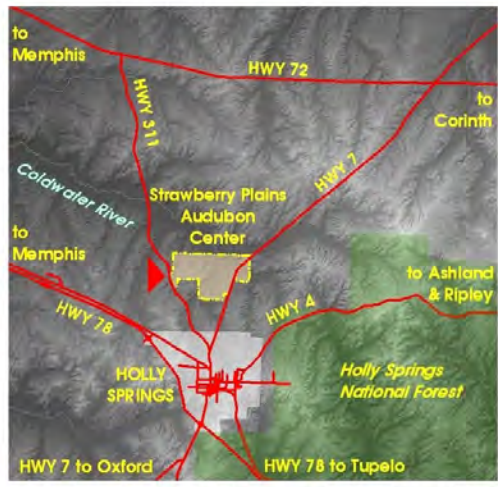
NAD 1983 HARN StatePlane Mississippi East FIPS 23-1 Feet / 2006 Aerial

Trails Map

- Bluebird Trail
- Bluestem Trail
- History Loop
- Otter Trail
- Sandy Creek Trail
- Sharecropper Trail
- Wildflower Trail
- Entrance Road

Contact: 662-252-1155

Strawberry Plains Audubon Center
Holly Springs, Mississippi



Location Map